

ADVANCED WATER FILTRATION SOLUTIONS

FOR AQUACULTURE APPLICATIONS

50-6,840 m³/h
Max. Flow Rate

10-500 µm
Filtration Degree

100%
Screen Cleaning

As Low As 1.6 bar
Min. Operating
Pressure

2,500-180,000 cm²
Screen Area in a
Single Filter

Vertical and
Horizontal
Configuration

ENGINEERED FILTRATION.

Filtersafe

ABOUT FILTERSAFE®

Our Story

Filtersafe filters the most challenging water, making us the ideal filter for delicate aquaculture installations. Filtersafe started in 2004 with the goal of creating a seawater filter to protect aquatic environments and has since grown to be a world leader in seawater, brackish, and freshwater filtration.



Shrimp Farm Installation



Aquaculture installation

Filtersafe® Advantages



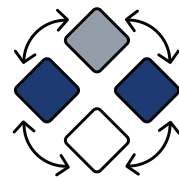
RELIABLE FILTERS

The dependable filter choice with near-zero maintenance filter options.



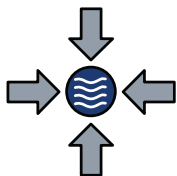
REAL ENERGY SAVINGS

Lower operating pressure capability (down to 1.6 bar) means lower ongoing energy costs.



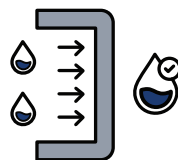
MODULAR DESIGN

Horizontal and vertical installation options that can to fit your configuration.



HIGH FLOW / SMALL FOOTPRINT

Just one unit can filter up to 5,000 m³/hr, while taking up minimal space.



SUPERIOR PROTECTION

Our first-class filtration protects your system from unplanned maintenance and, when relevant, reduces the amount of secondary treatment required.



GLOBAL PRESENCE

With manufacturing facilities, offices, and support personnel located across the globe, we're there when you need us.

OUR INSTALLATIONS CAN BE FOUND FROM THE USA TO SIBERIA TO MALAYSIA.

DOOSAN

"Filtersafe auto strainers have been installed in the Sharqiyah Desalination Plant in Oman for UF protection since 2019. The reason for choosing Filtersafe product is due to its compactness and horizontal configuration which is much easier to maintain and service. The product is also equipped with its patented technology which has proven reliable and performs efficiently to the expectation and demands of the plant."



"APT Water are very proud to be partnered with Filtersafe Automatic Screen Filtration to work on projects such as the one at Willie Creek Pearl Farm. Throughout the last year the water quality varied significantly in the tidal creek that also experienced cyclone conditions resulting in very high total suspended solids. Evidence that the Filtersafe Everclear cleaning system is a market leading design".



"Filtersafe dramatically reduced our problems. Our previous filtration system couldn't cope with our source water. The filters would have to be stopped and manually cleaned at least 5-6 times a season. Since the Filtersafe filter replaced the previous filtration system, we haven't had to open it to clean it even once. The Filtersafe filter saves us a tremendous amount of man-hours. Even downstream, where we have more filtration systems, of the previous kind, we previously had to stop and clean them 3 times a week. Now we only have to clean them once a month"



"Bloom Agro chose Filtersafe for their unique filtration technologies, that quite simply, allows their filters to work reliably and effectively in situations where other filters have not been able to. We endorse Filtersafe filters for use in applications where reliability and durability are important."



RO Membrane Protection Project



RO Membrane Protection Project



UF Pre-Treatment Desalination Project



UF Membrane Protection Project



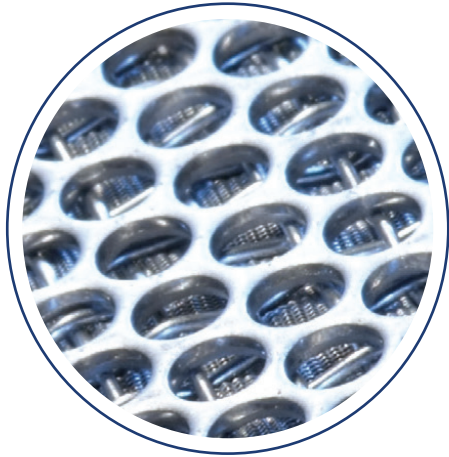
Lloyd's Register

DNV



FILTERSAFE® TECHNOLOGY

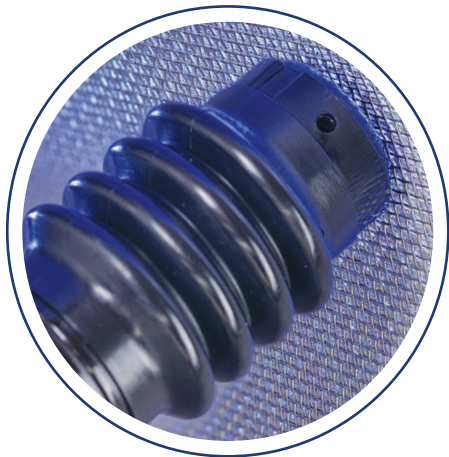
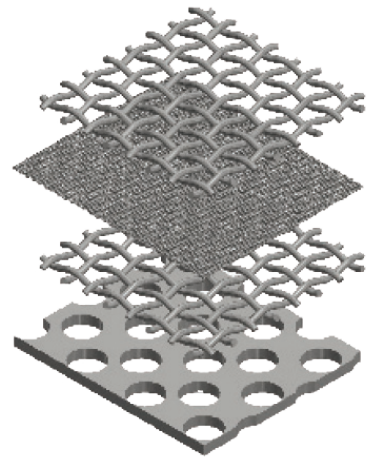
Filtersafe's automatic screen filters utilize unique, patented and cutting edge technologies to ensure the high performance demands of the market are met. Our filters utilize our own market-proven **smartweave™** filter screens and **nozzlex®** proximity suction nozzles:



smartweave™

high performance
filtration screens:

- Multi-layered sintered structure
- Enhanced strength & durability
- Filters from 10-500 microns
- Available in 316L, 904L, SMO254



nozzlex®

self-cleaning cycle for maximum
removal efficiency:

- Self balancing cleaning nozzle
- High Efficiency clean
- Zero screen wear + reduced nozzle wear
- Low pressure operation



Together they are:

EVERCLEAR™

An unparalleled automatic
filtration cycle.

WE ENGINEER FILTRATION SOLUTIONS

Engineered for challenging conditions with various upgrades available to meet your needs.

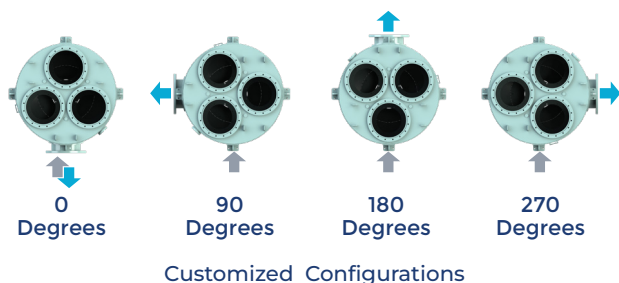
Tailored Filtration Solutions

Engineered to be the only filter your installation needs.

- **Large primary filter**
- **Fine filtration perfect down to 10µm**
- **Near zero maintenance filters**
- **Plug & Play filters**

Modular Design

We offer filters with a modular design that allows for numerous configuration options and is adaptable for any installation.



International Engineering Standards

Filtersafe can offer filters that are compliant to any international specifications or requirements, such as classification societies, or design appraisals (ASME, PED, NR13, AD2000, etc.).

Engineered for Ease of Maintenance

- **Simple access to primary & main screens**
- **Internal design optimized for screen removal**
- **External screen service stand for easy maintenance (optional)**

turbo™ & **superturbo™** for High Sediment Loads

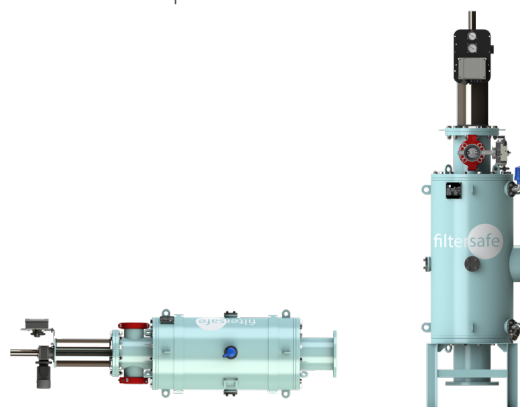
All Filtersafe® automatic screen filters can be equipped with our unique **turbo™** technology which increases the filter's capability to operate in high dirt-load situations. This unique feature gives our filters a distinct market advantage in challenging sediment-rich environments.

Custom Pressure Vessel Design & Explosion Proof Prepared

Filtersafe offers filters explosion proof prepared (Ex d or Ex ia) for up to Zone 0 hazardous area installations.

Horizontal & Vertical Configurations

Our filters can be rotated to fit your configuration needs, either for Horizontal installation to ease service & accessibility, or for Vertical installation for minimal footprint.



Horizontal Configuration

Vertical Configuration

Filtersafe BSE-Series

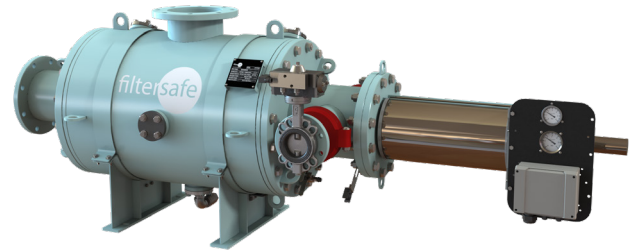
VERTICAL & HIGH CAPACITY AUTOMATIC FILTERS



Compact Screen

50-1,475 m³/hr

- The largest single screen filter on the market
- Small footprint
- Horizontal and vertical configurations



High-Capacity Single Screen

50-2,500 m³/hr

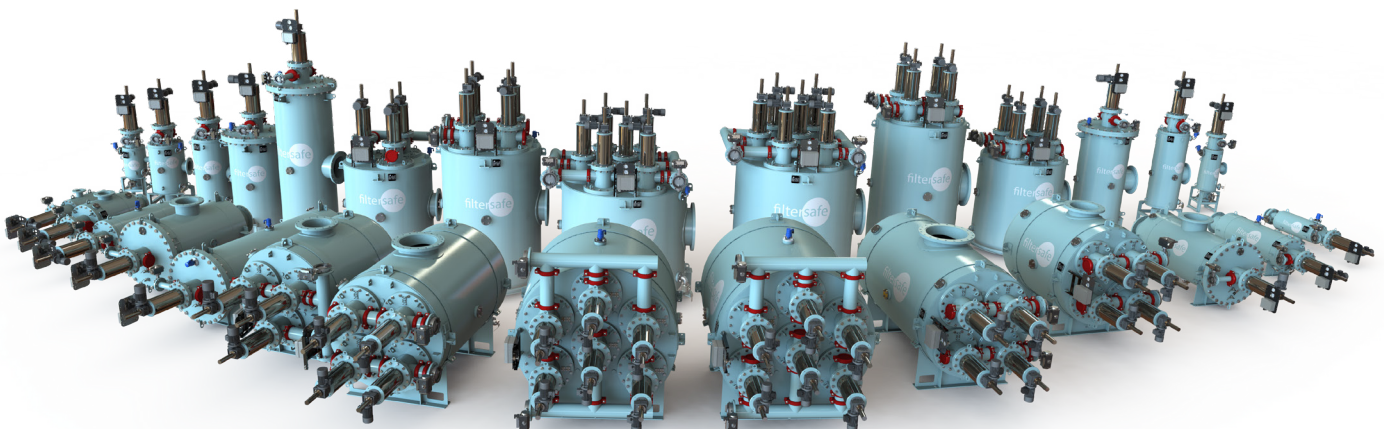
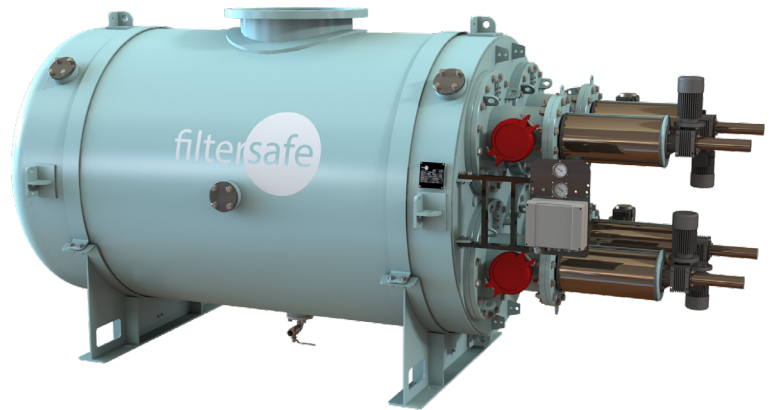
- The largest single screen filter on the market
- Small footprint
- Modular by Design



Multi-Screen

Up to 6,840, m³/hr

- Multiple screens in single pressure vessel
- Unique twin-screen assembly reduces service space required



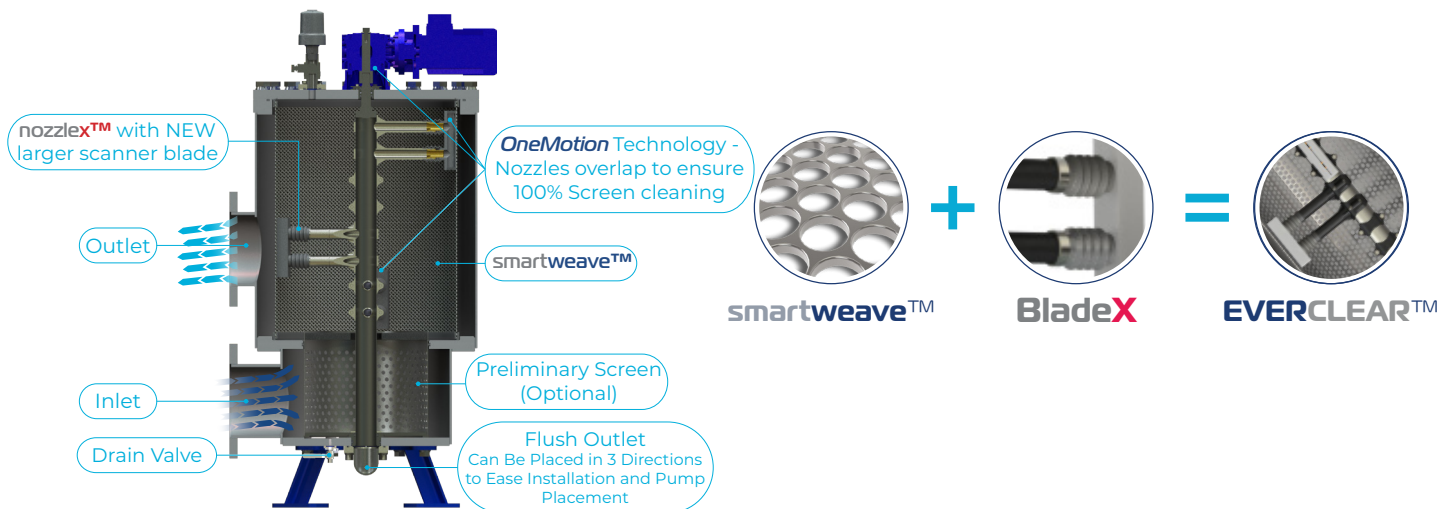


AUTOMATIC ELECTRIC SELF-CLEANING SCREEN FILTER

- ✓ Low Recovery Rate - Maintains Filtration Efficiency
- ✓ 100% Screen Cleaning with Each Revolution
- ✓ Ease of Maintenance - 1 Person Screen Maintenance
- ✓ User-Friendly Operation
- ✓ Small Footprint & Service Space
- ✓ Cost-Effective
- ✓ Compatible With Existing BWMS
- ✓ Removes 99.6% of Organisms Over 50 µm
- ✓ Proximity Nozzle + Unpleated Screen = 100% Screen Cleaning



Up to 500 m³/h Max. Flow Rate	25 & 40 µm Filtration Degree	Up to 10 bar Pressure Rating
1.6 bar Min. Operating Pressure	3,300-16,200 cm² Screen Area	Max. Working Temp 50°C



MANTA Series | Technical Specifications:

Model	MANTA 33 #MAN0033	MANTA 56 #MAN0056	MANTA 110 #MAN0110	MANTA 162 #MAN0162
Inlet \ Outlet*	4" (DN100)	6" (DN150)	8" (DN200)	10" (DN250)
Screen Area	3,300 cm²	5,000 cm²	11,000 cm²	16,200 cm²
Max Capacity**	90 m³/hr.	150 m³/hr.	340 m³/hr.	500 m³/hr.

* Available in DIN PN10. For additional standards contact us.

** Dependent on filtration degree, water quality and inlet size. Contact us for more information.



OUR HEADQUARTERS

Our flagship factory. The 4,000 m² building contains our regional sales offices, R&D facilities and manufacturing and assembly plant. The facility is capable of handling very large volumes of production with an incredibly fast lead time.

sales@filtersafe.net

ASIA

- SINGAPORE
sales@filtersafe.net
- CHINA
sales@filtersafe.net

THE AMERICAS

- BRAZIL & CHILE
sales@filtersafe.net
- UNITED STATES
sales@filtersafe.net

EUROPE

- EASTERN EUROPE & CIS COUNTRIES
sales@filtersafe.net
- WESTERN EUROPE
Distributor:
Teknor System AS
norway@teknor.no

OCEANIA

- AUSTRALIA & NEW ZEALAND
Regional Office &
Distribution Center
sales@filtersafe.net



- Filtersafe Offices
- Filtersafe Manufacturing Facilities



www.filtersafe.net



Filtersafe reserves the right to change any of the information presented in this document without prior notice.

The data presented in this document is for general information only and cannot be used for quotation purposes. Please contact Filtersafe for specific quote.

© Copyright Filtersafe® 2025 | DOC-00673 | V.02