



# ADVANCED WATER FILTRATION SOLUTIONS

## FOR INDUSTRIAL APPLICATIONS

**50-9,000 m<sup>3</sup>/h**  
Max. Flow Rate

**10-6,000 µm**  
Filtration Degree

**100%**  
Screen Cleaning

**As Low As 1.6 bar**  
Min. Operating  
Pressure

**2,500-180,000 cm<sup>2</sup>**  
Screen Area in a  
Single Filter

**Vertical and  
Horizontal**  
Configuration

**ENGINEERED FILTRATION.**

**Filtersafe**

# ABOUT FILTERSAFE®

## Our Story

Filtersafe filters the most challenging water, making us the ideal filter for Industrial installations. Filtersafe has decades of experience filtering water for cooling towers, invasive species removal, service water, produced water, protection, and more for Municipal, Mining, Pulp & Paper, and other industrial applications.



Cooling Seawater



Mining installation in Brazil

## Filtersafe® Advantages



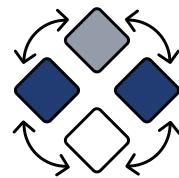
### RELIABLE FILTERS

The dependable filter choice with near-zero maintenance filter options.



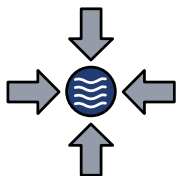
### REAL ENERGY SAVINGS

Lower operating pressure capability (down to 1.6 bar) means lower ongoing energy costs.



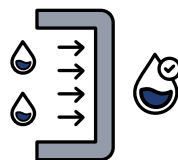
### MODULAR DESIGN

Horizontal and vertical installation options that can to fit your configuration.



### HIGH FLOW / SMALL FOOTPRINT

Just one unit can filter up to 5,000 m<sup>3</sup>/hr, while taking up minimal space.



### SUPERIOR PROTECTION

Our first-class filtration protects your system from unplanned maintenance and, when relevant, reduces the amount of secondary treatment required.



### GLOBAL PRESENCE

With manufacturing facilities, offices, and support personnel located across the globe, we're there when you need us.



# OUR INDUSTRIAL INSTALLATIONS CAN BE FOUND FROM THE USA TO SIBERIA TO MALAYSIA.

## DOOSAN

*"Filtersafe auto strainers have been installed in the Sharqiyah Desalination Plant in Oman for UF protection since 2019. The reason for choosing Filtersafe product is due to its compactness and horizontal configuration which is much easier to maintain and service. The product is also equipped with its patented technology which has proven reliable and performs efficiently to the expectation and demands of the plant."*



*"APT Water are very proud to be partnered with Filtersafe Automatic Screen Filtration to work on projects such as the one at Willie Creek Pearl Farm. Throughout the last year the water quality varied significantly in the tidal creek that also experienced cyclone conditions resulting in very high total suspended solids. Evidence that the Filtersafe Everclear cleaning system is a market leading design".*



*"Filtersafe dramatically reduced our problems. Our previous filtration system couldn't cope with our source water. The filters would have to be stopped and manually cleaned at least 5-6 times a season. Since the Filtersafe filter replaced the previous filtration system, we haven't had to open it to clean it even once. The Filtersafe filter saves us a tremendous amount of man-hours. Even downstream, where we have more filtration systems, of the previous kind, we previously had to stop and clean them 3 times a week. Now we only have to clean them once a month"*



*"Bloom Agro chose Filtersafe for their unique filtration technologies, that quite simply, allows their filters to work reliably and effectively in situations where other filters have not been able to. We endorse Filtersafe filters for use in applications where reliability and durability are important."*



RO Membrane Protection Project



RO Membrane Protection Project



UF Pre-Treatment Desalination Project



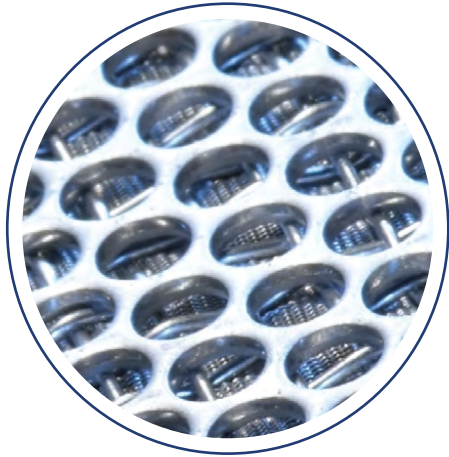
UF Membrane Protection Project



Skid mounted Cooling Tower System

# FILTERSAFE® TECHNOLOGY

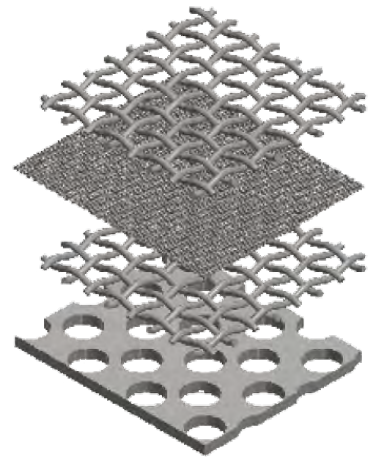
Filtersafe's automatic screen filters utilize unique, patented and cutting edge technologies to ensure the high performance demands of the market are met. Our filters utilize our own market-proven **smartweave™** filter screens and **nozzlex®** proximity suction nozzles:



## smartweave™

high performance  
filtration screens:

- Multi-layered sintered structure
- Enhanced strength & durability
- Filters from 10-500 microns
- Available in 316L, 904L, SMO254



## nozzlex®

self-cleaning cycle for maximum  
removal efficiency:

- Self balancing cleaning nozzle
- High Efficiency clean
- Zero screen wear + reduced nozzle wear
- Low pressure operation



Together they are:

## EVERCLEAR™

An unparalleled automatic  
filtration cycle.

# WE ENGINEER FILTRATION SOLUTIONS

*Engineered for challenging conditions with various upgrades available to meet your needs.*

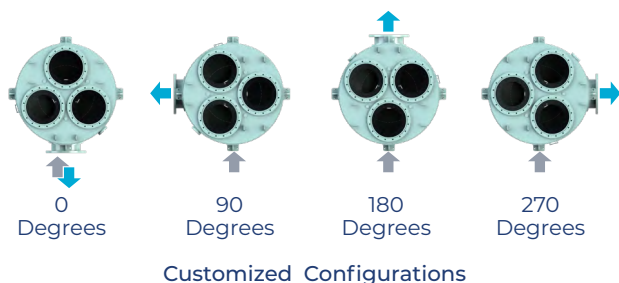
## Tailored Filtration Solutions

Engineered to be the only filter your installation needs.

- Large primary filter
- Fine filtration perfect down to 10µm
- Near zero maintenance filters
- Plug & Play filters

## Modular Design

We offer filters with a modular design that allows for numerous configuration options and is adaptable for any installation.



## International Engineering Standards

Filtersafe can offer filters that are compliant to any international specifications or requirements, such as classification societies, or design appraisals (ASME, PED, NR13, AD2000, etc.).

## Engineered for Ease of Maintenance

- Simple access to primary & main screens
- Internal design optimized for screen removal
- External screen service stand for easy maintenance (optional)

## **turbo™ & superturbo™**

### for High Sediment Loads

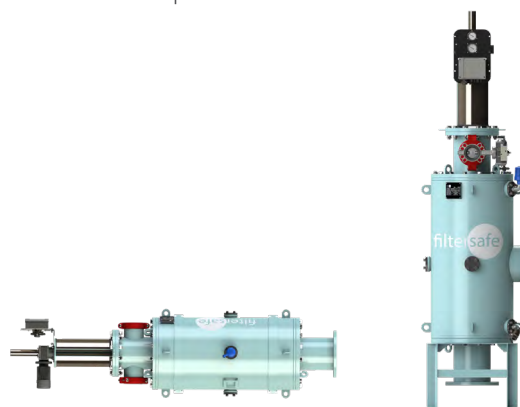
All Filtersafe® automatic screen filters can be equipped with our unique **turbo™** technology which increases the filter's capability to operate in high dirt-load situations. This unique feature gives our filters a distinct market advantage in challenging sediment-rich environments.

## Custom Pressure Vessel Design & Explosion Proof Prepared

Filtersafe offers filters explosion proof prepared (Ex d or Ex ia) for up to Zone 0 hazardous area installations.

## Horizontal & Vertical Configurations

Our filters can be rotated to fit your configuration needs, either for Horizontal installation to ease service & accessibility, or for Vertical installation for minimal footprint.



Horizontal Configuration

Vertical Configuration



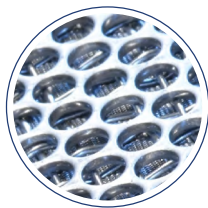
# Filtersafe FS-Series

## VERTICAL & HIGH CAPACITY AUTOMATIC FILTERS

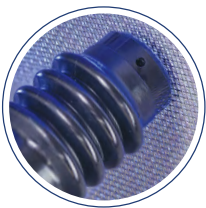
- ✓ The Largest Single Filter on the Market
  - ✓ High Flow/Small Footprint
  - ✓ Modular Design with Vertical & Horizontal Configurations
- ✓ Epoxy Coated Carbon Steel Construction
  - ✓ Cleans While in Operation
  - ✓ Upgradeable Cleaning Capacity for High Dirt Loads



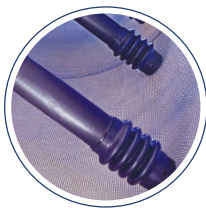
2,500 m <sup>3</sup> /h Max. Flow Rate	10-500 micron Filtration Degree	100% Screen Cleaning
Down to 1.6 bar Min. Operating Pressure	Up to 50,000 cm <sup>2</sup> Filter Area	Max. Working Temp 50°C



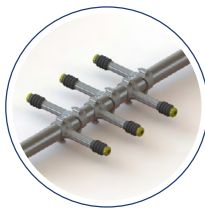
smartweave™



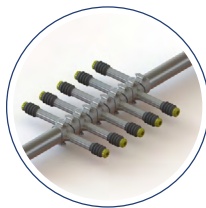
nozzlex®



EVERCLEAR™



turbo™



superturbo™

### Vertical & High-Capacity Single Screen Series | Technical Specifications:

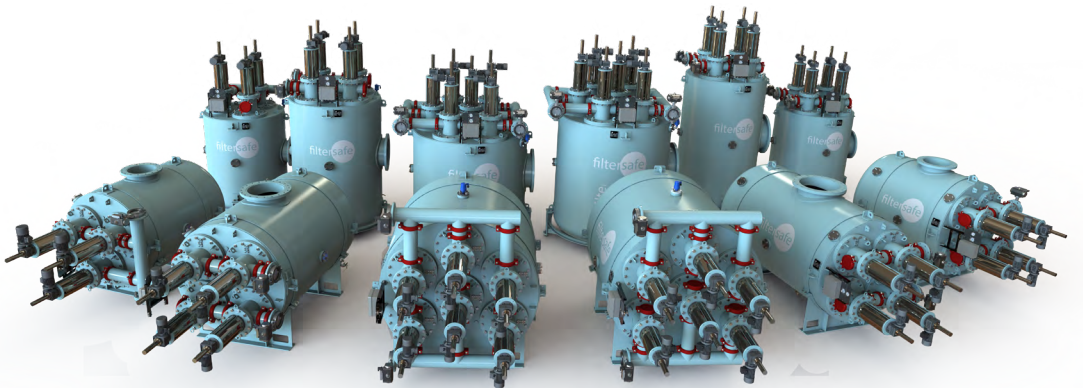
Model	Vertical Screen Filters					High Capacity Single Screen Filters		
	FS0031 #FS-031E	FS0061 #FS-061E	FS0101 #FS-101E	FS0151 #FS-151E	FS0201 #FS-201E	FS0300 #FS-300E	FS0400 #FS-400E	FS0500 #FS-500E
Inlet \ Outlet*	2"-6"	3"-16"	4"-12"	4"-14"	4"-14"	8"-20"	8"-24"	8"-24"
Screen Area	3,000 cm <sup>2</sup>	6,000 cm <sup>2</sup>	10,000 cm <sup>2</sup>	15,000 cm <sup>2</sup>	20,000 cm <sup>2</sup>	30,000 cm <sup>2</sup>	40,000 cm <sup>2</sup>	50,000 cm <sup>2</sup>
Max Capacity**	150 m <sup>3</sup> /hr.	300 m <sup>3</sup> /hr.	500 m <sup>3</sup> /hr.	800 m <sup>3</sup> /hr.	900 m <sup>3</sup> /hr.	1,500 m <sup>3</sup> /hr.	2,000 m <sup>3</sup> /hr.	2,500 m <sup>3</sup> /hr.

\* Available in DIN PN10/16. For additional standards contact us.  
\*\* 200 µm max. flow rates. Dependent on filtration degree, water quality and inlet size. Contact us for more information.

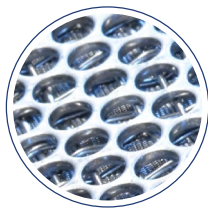
# Filtersafe FS-Series

## MULTI-SCREEN AUTOMATIC FILTERS

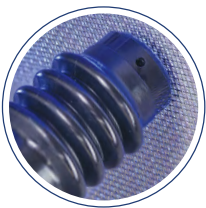
- ✓ For Large Flow Rates in Single Pressure Vessel
  - ✓ Multiple Screen in Single Pressure Vessel
  - ✓ Modular Design with Vertical & Horizontal Configurations
  - ✓ Unique Twin-Screen Assembly Reduces Service Space Required
- ✓ Epoxy Coated Carbon Steel Construction
  - ✓ Cleans While in Operation
  - ✓ Upgradeable Cleaning Capacity for High Dirt Loads



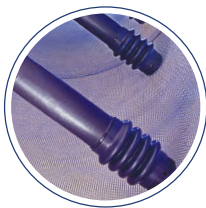
9,000 m <sup>3</sup> /h Max. Flow Rate	10-500 µm Filtration Degree	100% Screen Cleaning
Down to 1.6 bar Min. Operating Pressure	Up to 180,000 cm <sup>2</sup> Filter Area	Max. Working Temp 50°C



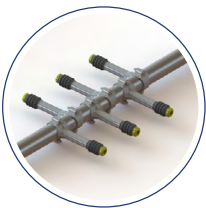
smartweave™



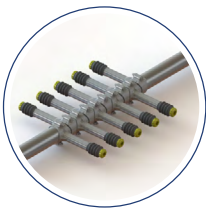
nozzlex®



EVERCLEAR™



turbo™



superturbo™

### Multi Screen Series | Technical Specifications:

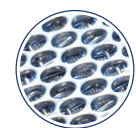
Model	Multi Screen Filters					
	FS0603 #FS-603E	FS0804 #FS-804E	FS1004 #FS-1004E	FS1204 #FS-1204E	FS1406 #FS-1406E	FS1806 #FS-1806E
Inlet \ Outlet*	10"-28"	10"-30"	12"-32"	12"-32"	14"-36"	20"-36"
Screen Area	60,000 cm <sup>2</sup>	80,000 cm <sup>2</sup>	100,000 cm <sup>2</sup>	120,000 cm <sup>2</sup>	140,000 cm <sup>2</sup>	180,000 cm <sup>2</sup>
Max Capacity**	2,300 m <sup>3</sup> /hr.	3,000 m <sup>3</sup> /hr.	3,800 m <sup>3</sup> /hr.	4,500 m <sup>3</sup> /hr.	5,200 m <sup>3</sup> /hr.	9,000 m <sup>3</sup> /hr.

\* Available in DIN PN10/16. For additional standards contact us.  
\*\* 200 µm max. flow rates. Dependent on filtration degree, water quality and inlet size. Contact us for more information.

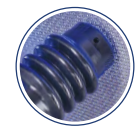
# TITAN

## AUTOMATIC SELF-CLEANING SCREEN FILTER

- ✓ Largest Screen Area in a Horizontal Filter
- ✓ Easy Maintenance - No Need for Walkways and Lifting Cranes
- ✓ Safe & Speedy 1 Person Screen Maintenance
- ✓ Designed for High TSS Applications
- ✓ Full 316 Stainless Steel Construction
- ✓ Cleans While In Operation



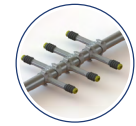
smartweave™



nozzlex®



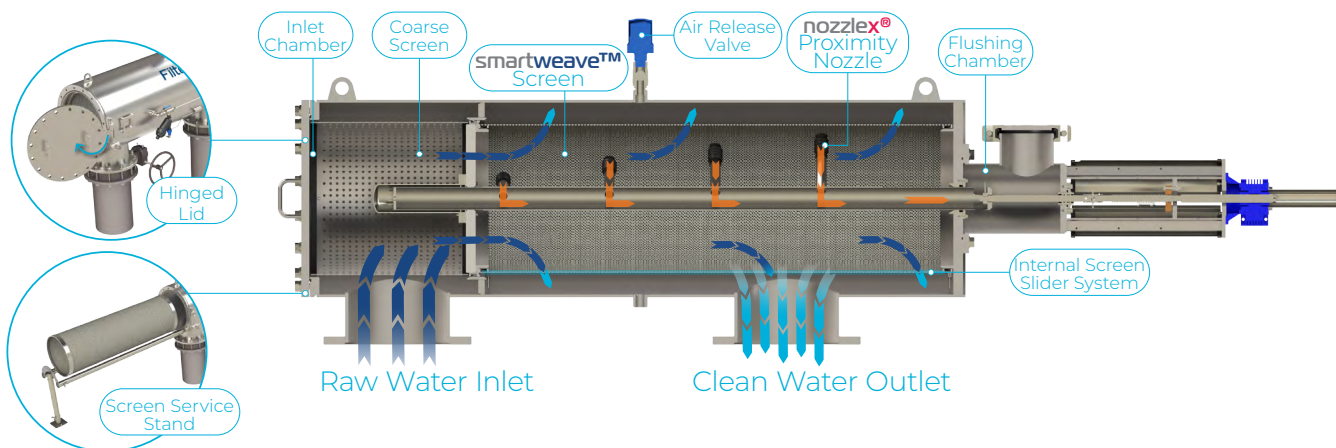
EVERCLEAR™



turbo™



Up to <b>2,800 m³/h</b> High Flow Rate	<b>10-500 µm</b> Filtration Degree	<b>10 &amp; 16 bar</b> Max. Operating Pressure	<b>Low</b> Flush Flow
<b>2 bar</b> Min. Operating Pressure	<b>7,000-40,000 cm²</b> Screen Area	<b>AD 2000</b> Design Code	Max. Operating Temp <b>60°C</b>



### TITAN Series | Technical Specifications:

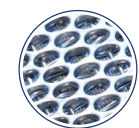
Model	TITAN 7K #TTN0070	TITAN 10K #TTN0100	TITAN 20K #TTN0200	TITAN 30K #TTN0300	TITAN 40K #TTN0400	TITAN 50K #TTN0500
Inlet \ Outlet*	4"-8"	6"-12"	8"-16"	16"-24"	16"-24"	20"-28"
Screen Area	7,000 cm²	10,000 cm²	20,000 cm²	30,000 cm²	40,000 cm²	50,000 cm²
Max Capacity**	350 m³/hr.	500 m³/hr.	800 m³/hr.	1,000 m³/hr.	1,600 m³/hr.	2,000 m³/hr.

\* Available in DIN PN10/16, British standard BSTD/E, ANSI B16.5 150PSI. For additional standards contact us.  
 \*\* Dependent on filtration degree, water quality and inlet size. Contact us for more information.



- ✓ Full 316 Stainless Steel Construction
- ✓ 4-Layer Sintered Screen with Class Leading Effective Screen Area
- ✓ Highly Effective Cleaning with Over 99% Recovery Rate and Full Screen Recovery
- ✓ Horizontal and Vertical Models Available

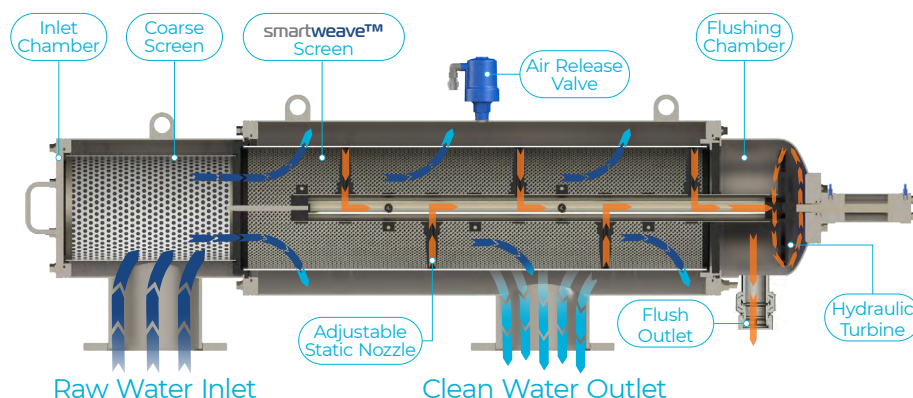
- ✓ Easy Access to Internal Parts
- ✓ The Filters are Plug & Play
- ✓ Failsafe NC Flush Valve
- ✓ Bluetooth DC Powered Controller



smartweave™



Up to <b>600 m<sup>3</sup>/h</b> Max. Flow Rate	<b>80-500 µm</b> Filtration Degree	<b>10 bar</b> Max. Operating Pressure	<b>Less than 1%</b> Backwash Water Consumption
<b>2 bar</b> Min. Operating Pressure	Up to <b>12,000 cm<sup>2</sup></b> Filter Area	<b>AD 2000</b> Design Code	Max. Temp <b>65°C</b>



### Trident H Series | Technical Specifications:

Model	Trident 4800H #TRH0048	Trident 7200H #TRH0072	Trident 9600H #TRH0096	Trident 12000H #TRH0120
<b>Inlet \ Outlet*</b>	4"-6"	6"-8"	8"-10"	10"-12"
<b>Screen Area</b>	4800 cm <sup>2</sup>	7200 cm <sup>2</sup>	9600 cm <sup>2</sup>	12,000 cm <sup>2</sup>
<b>Effective Screen Area</b>	4,560 cm <sup>2</sup>	6,840 cm <sup>2</sup>	9,120 cm	11,400 cm
<b>Max Capacity**</b>	180 m <sup>3</sup> /hr.	280 m <sup>3</sup> /hr.	400 m <sup>3</sup> /hr.	600 m <sup>3</sup> /hr.

\* Available in DIN PN10/16, British standard BSTD/E, ANSI B16.5 150PSI. For additional standards contact us.  
 \*\* Dependent on filtration degree, water quality and inlet size. Contact us for more information.

# LEVIATHAN

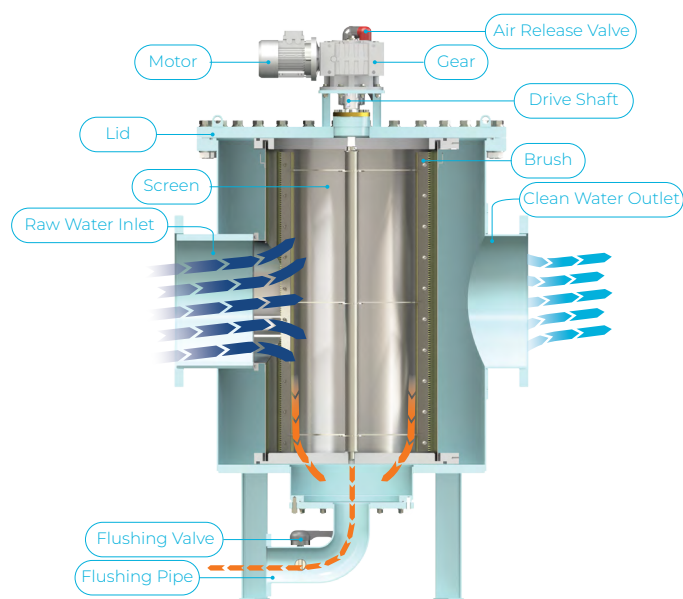
## AUTOMATIC STRAINER FILTER WITH BRUSH CLEANING TECHNOLOGY

- ✓ Multi-Purpose Filtration Solution. Optimized for industrial, municipal and agricultural applications.
- ✓ Huge filtration area in small footprint.
- ✓ Minimal line pressure needed for operation.
- ✓ Continual operation - No down time when flushing.
- ✓ Robust design with a single moving part means minimal maintenance.

- ✓ Highly effective cleaning with over 99.2% Recovery Rate and full screen recovery.
- ✓ Rubber lining on request!



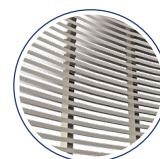
Up to <b>8,000 m³/h</b> Max. Flow Rate	<b>200-6,000 µm</b> Filtration Degree	<b>100%</b> Screen Cleaning	<b>Less than 1%</b> Backwash Water Consumption
<b>1 bar</b> Min. Operating Pressure	Up to <b>80,000 cm²</b> Filter Area	<b>AD 2000 PV</b> Design Code	Max. Temp <b>60°C</b>



Brush Filter  
Cleaning



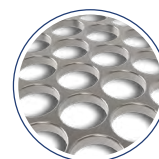
Durable Screen  
Design



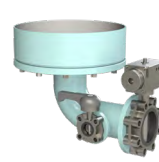
Wedgewire  
Screen



A Single  
Moving Part



Perforated  
Screen



Lower  
Chamber Traps  
Heavy Particles

### LEVIATHAN Series | Technical Specifications:

Model	Leviathan 120 #LEV0120	Leviathan 200 #LEV0200	Leviathan 300 #LEV0300	Leviathan 400 #LEV0400	Leviathan 500 #LEV0500	Leviathan 600 #LEV0600	Leviathan 700 #LEV0700	Leviathan 800 #LEV0800
Inlet \ Outlet*	6"-14"	20"	24"	28"	32"	36"	By request	By request
Screen Area	12,000 cm²	20,000 cm²	30,000 cm²	40,000 cm²	50,000 cm²	60,000 cm²	70,000 cm²	80,000 cm²
Max Capacity**	1,080 m³/hr.	1,800 m³/hr.	2,700 m³/hr.	3,600 m³/hr.	4,500 m³/hr.	5,400 m³/hr.	6,300 m³/hr.	7,200 m³/hr.

\* Available in DIN PN10/16. For additional standards contact us.

\*\* Dependent on filtration degree, water quality and inlet size. Contact us for more information.

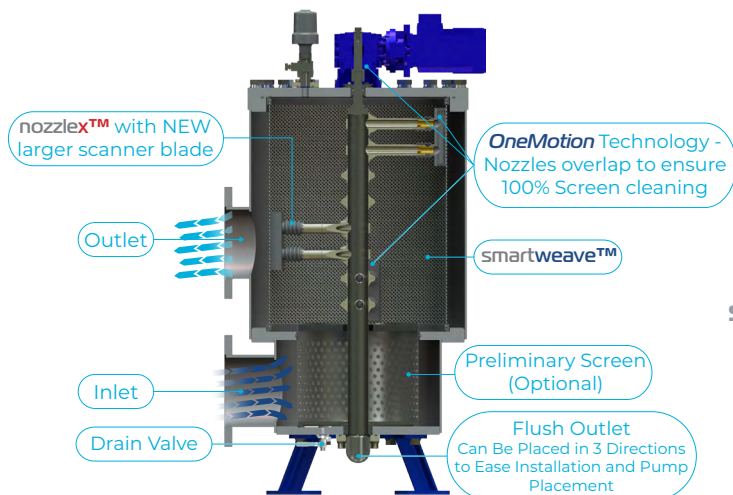


# AUTOMATIC ELECTRIC SELF-CLEANING SCREEN FILTER

- ✓ Low Recovery Rate - Maintains Filtration Efficiency
- ✓ 100% Screen Cleaning with Each Revolution
- ✓ Ease of Maintenance - 1 Person Screen Maintenance
- ✓ User-Friendly Operation
- ✓ Small Footprint & Service Space
- ✓ Cost-Effective
- ✓ Compatible With Existing BWMS
- ✓ Removes 99.6% of Organisms Over 50 µm
- ✓ Proximity Nozzle + Unpleated Screen = 100% Screen Cleaning



Up to <b>500 m³/h</b> Max. Flow Rate	<b>25 &amp; 40 µm</b> Filtration Degree	<b>10 bar</b> Pressure Rating
<b>1.6 bar</b> Min. Operating Pressure	<b>3,300-16,200 cm²</b> Screen Area	Max. Working <b>Temp 50°C</b>



## MANTA Series | Technical Specifications:

Model	MANTA 33 #MAN0033	MANTA 56 #MAN0056	MANTA 110 #MAN0110	MANTA 162 #MAN0162
Inlet \ Outlet*	4" (DN100)	6" (DN150)	8" (DN200)	10" (DN250)
Screen Area	3,300 cm²	5,000 cm²	11,000 cm²	16,200 cm²
Max Capacity**	90 m³/hr.	150 m³/hr.	340 m³/hr.	500 m³/hr.

\* Available in DIN PN10. For additional standards contact us.

\*\* Dependent on filtration degree, water quality and inlet size. Contact us for more information.

**Contact Us for More Info:**  
sales@filtersafe.net | www.filtersafe.net







## OUR HEADQUARTERS

Our flagship factory. The 4,000 m<sup>2</sup> building contains our regional sales offices, R&D facilities and manufacturing and assembly plant. The facility is capable of handling very large volumes of production with an incredibly fast lead time.

[sales@filtersafe.net](mailto:sales@filtersafe.net)

### ASIA

- **SINGAPORE**  
[fssingapore@filtersafe.net](mailto:fssingapore@filtersafe.net)
- **CHINA**  
[sales@filtersafe.net](mailto:sales@filtersafe.net)

### THE AMERICAS

- **BRAZIL, Rio de Janeiro**  
[fsbrazil@filtersafe.net](mailto:fsbrazil@filtersafe.net)
- **CHILE & PERU**  
[fschile@filtersafe.net](mailto:fschile@filtersafe.net)
- **UNITED STATES**  
[fsusa@filtersafe.net](mailto:fsusa@filtersafe.net)

### EUROPE

- **RUSSIA, EASTERN EUROPE & CIS COUNTRIES**  
[fssrussia@filtersafe.net](mailto:fssrussia@filtersafe.net)

### OCEANIA

- **AUSTRALIA & NEW ZEALAND**  
Regional Office  
& Distribution Center  
[fsaustralia@filtersafe.net](mailto:fsaustralia@filtersafe.net)



- Filtersafe Offices
- Filtersafe Manufacturing Facilities



[www.filtersafe.net](http://www.filtersafe.net)



Filtersafe reserves the right to change any of the information presented in this document without prior notice.

The data presented in this document is for general information only and cannot be used for quotation purposes. Please contact Filtersafe for specific quote.