

BallastSafe e-Series

AUTOMATIC SELF-CLEANING
SCREEN FILTER



5,200 m³/h
Max. Flow Rate

10-500 micron
Filtration Degree

100%
Screen Cleaning

Down to 1.6 bar
(26psi) Min. Operating
Pressure

Up to 140,000 cm²
Filter Area

**Max. Working
Temp 50°C**

**ENGINEERED FOR BALLAST
WATER FILTRATION.**

Filtersafe

Our Story

Filtersafe is the only ballast water filtration company that engineered a dedicated seawater filter whose express goal was to make deballasting safer and more efficient for shipowners and the aquatic environment.

Since our beginning in 2004, Filtersafe has grown to be a world leader in seawater filtration, and our filters are installed in over 3,500 ships around the world.



Skid Packages



Filtersafe filter within an ERMA FIRST BWMS installation



Installing our patented nozzle[®] screen cleaning technology within a BSE Multi-Screen filter.



Our **BallastSafe** filters are modular and can be oriented in any direction to fit any installation.

WE LEAD THE MARINE WATER FILTRATION INDUSTRY FILTERING OVER 25% OF GLOBAL BALLAST WATER



Filtersafe[®] Advantages for Owners & Operators

- RELIABLE FILTERS:** The dependable filter choice and approved by all major class societies + IMO & USCG. That's why we filter over 25% of all ballast water worldwide.
- GLOBAL PRESENCE:** With manufacturing facilities, offices, and support personnel located across the globe, we're there when you need us.
- SAIL ANYWHERE:** We filter the most challenging waters so you can sail anywhere. Our filters won't clog.
- MODULAR DESIGN:** Horizontal and vertical installation options that can be rotated to fit your configuration.
- HIGH FLOW/SMALL FOOTPRINT:** Just one unit can filter up to 5,200 m³/hr, while taking up minimal space.
- SUPERIOR PROTECTION:** Our first-class filtration protects your system from unplanned maintenance and reduces the amount of secondary treatment required.
- LOWER BALLAST TANK MAINTENANCE:** Our **smartweave[™]** screen technology ensures minimal sediment intake to the disinfection process and ballast tanks.
- REAL ENERGY SAVINGS:** Lower operating pressure capability (1.6 bar) means lower ongoing energy costs.

OUR TECHNOLOGY

Our automatic screen filters utilize our unique, market-proven, and cutting edge patented technologies **smartweave™** filter screens and **nozzleX™** proximity suction nozzles ensuring the high performance demands of the market are met.



smartweave™

High Performance Filtration Screens:

1. Multi-layered sintered structure
2. Enhanced strength & durability
3. Available in 904L, SMO254



nozzleX®

High-Efficiency Filter Cleaning System:

1. Self balancing cleaning nozzle
2. High Efficiency clean
3. Zero screen wear + reduced nozzle wear
4. Low pressure operation

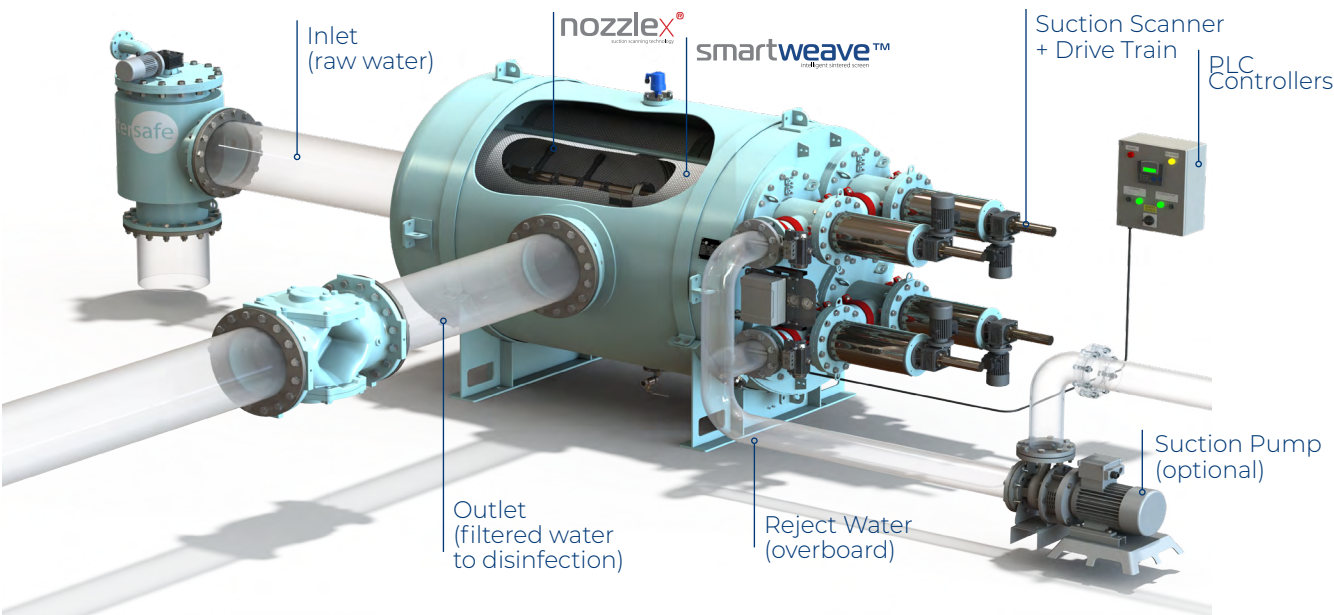


EVERCLEAR™

An Unparalleled Automatic Filtration Cycle.

Cleans While in Operation

1. **smartweave™** screen traps organic matter & TSS.
2. As sediments are trapped, pressure differential between inlet and outlet will initiate the cleaning process.
3. **nozzleX™** scans the entire **smartweave™** screen removing all matter, disposing of the reject water through the flushing chamber.
4. Filter returns to it original parameters.



TAILORED FILTRATION SOLUTIONS

Flexibility in Design & Installation:

The **BallastSafe Series'** modular design allows for any possible configuration and is particularly helpful in retrofit installations.

The vertical filter configuration operates in the exact same manner as a horizontally positioned unit and to the same performance standard, whilst substantially reducing its area footprint.

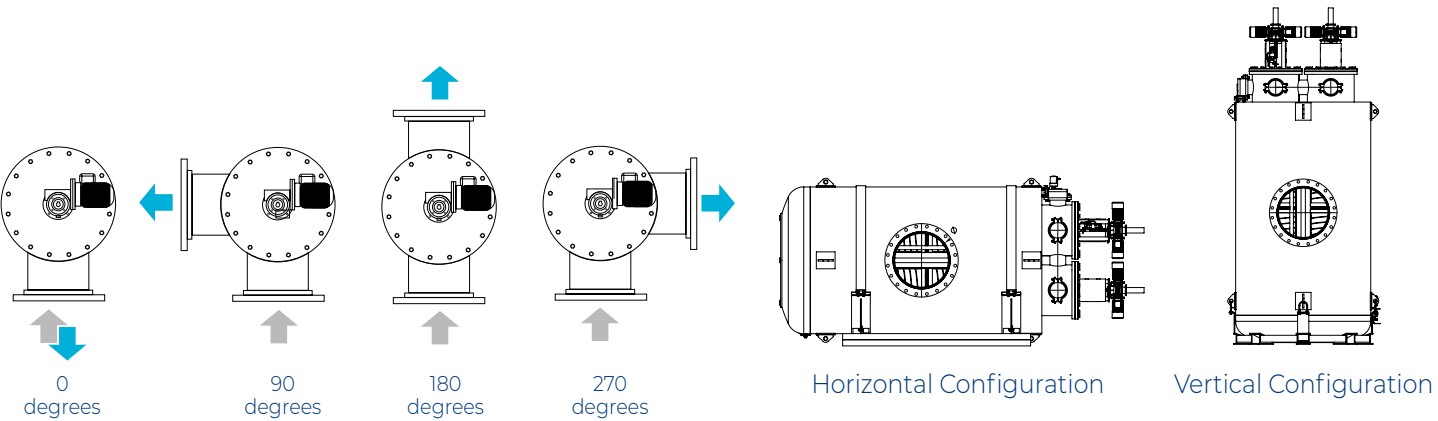
Custom Pressure Vessel Design & Explosion Proof Prepared

Filtersafe offers filters explosion proof prepared (Ex d or Ex ia) for up to Zone 0 hazardous area installations.



turbo™ & superturbo™ for High Sediment Loads


Upgrade your filter's cleaning capacity with **turbo™** or **superturbo™** upgrade packages:

- Doesn't impact shape or size of filter
- Maximizes cleaning capacity & speed while minimizing footprint
- Tested & Verified by Lloyd's Register and DHL.
- Ideal option for high loads when small footprint is key.




Optional Filter Accessories







Suction Pumps



PLC Controllers



smart valve

COMPACT BallastSafe e-SERIES FILTERS

| Model | | In/Out Connections (Inch) | 50 µm | | 40 µm | | 25 µm | |
|--------------------|-------------|---------------------------|-------------------------|----------------------------|-------------------------|----------------------------|-------------------------|----------------------------|
| | | | Max. Flow Rates (m³/hr) | Flushing Flow Rate (m³/hr) | Max. Flow Rates (m³/hr) | Flushing Flow Rate (m³/hr) | Max. Flow Rates (m³/hr) | Flushing Flow Rate (m³/hr) |
| BSE0101 (#BS-101E) | Standard | 6"-10" | 320 | 11 | 250 | 11 | 150 | 11 |
| | turbo™ | | 376 | 17 | 300 | 17 | 176 | 16 |
| | superturbo™ | | 427 | 23 | 350 | 23 | 200 | 21 |
| BSE0151 (#BS-151E) | Standard | 8"-12" | 480 | 17 | 375 | 17 | 250 | 16 |
| | turbo™ | | 565 | 28 | 450 | 28 | 294 | 26 |
| | superturbo™ | | 640 | 34 | 525 | 34 | 333 | 32 |
| BSE0201 (#BS-201E) | Standard | 10"-14" | 640 | 23 | 500 | 23 | 335 | 21 |
| | turbo™ | | 753 | 34 | 600 | 34 | 394 | 32 |
| | superturbo™ | | 853 | 45 | 700 | 45 | 447 | 42 |

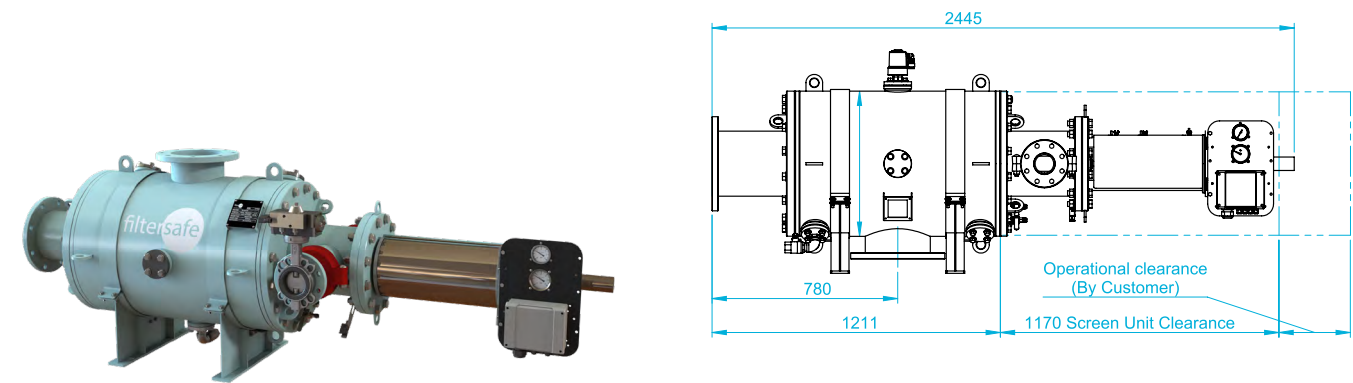
Note: Maximum flow rates at TSS loading of up to 50PPM as per IMO G8 Guidelines. When unsure of TSS loadings, consult Filtersafe.

| | | | | | |
|-------------------------|---|----------------------|---------------------------------|--|-------------------------------------|
| 853 m³/h Max. Flow Rate | Dedicated to BWT Market - 25, 40, 50 micron Filtration Degree | 100% Screen Cleaning | 1.6 bar Min. Operating Pressure | Up to 20,000 cm² screen in a single filter | Horizontal & Vertical Configuration |
|-------------------------|---|----------------------|---------------------------------|--|-------------------------------------|

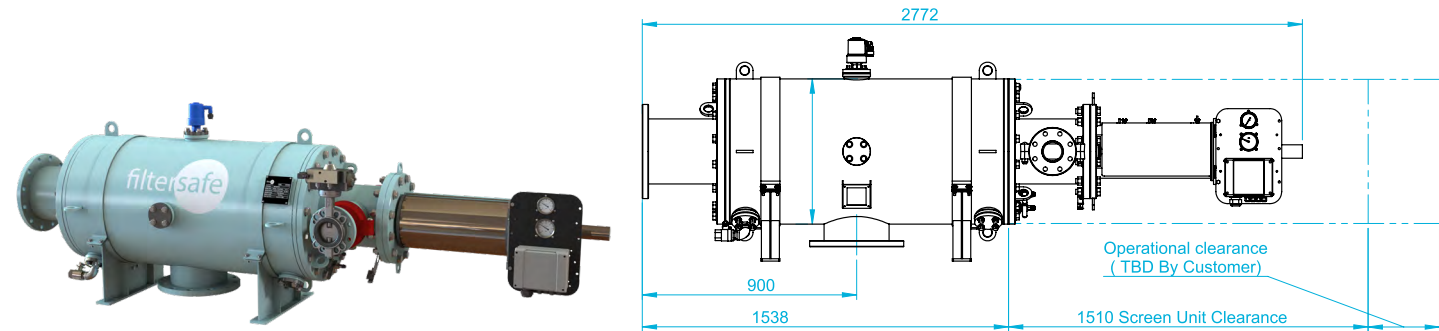
COMPACT BallastSafe e-SERIES

Horizontal Configuration Dimensions

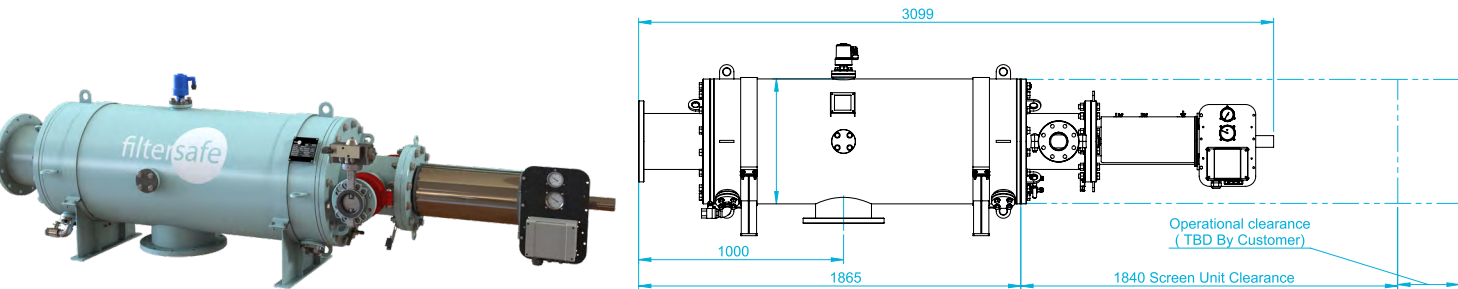
BallastSafe 101E (BSE0101/BS-101E)



BallastSafe 151E (BSE0151/BS-151E)



BallastSafe 201E (BSE0201/BS-201E)

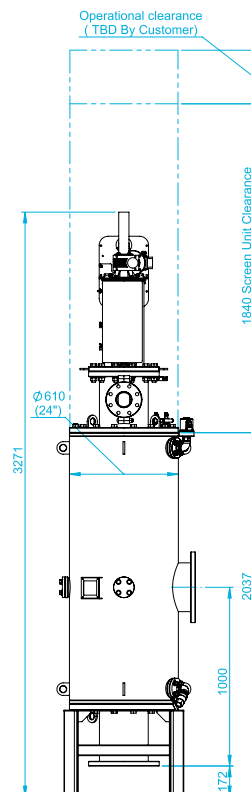


turbo™ & superturbo™ upgrades available

Vertical Configuration Dimensions

BallastSafe 201E

(BSE0201/BS-201E)



Compact BallastSafe e-Series Models

| | | BSE0101 (#BS-101E) | BSE0151 (#BS-151E) | BSE0201 (#BS-201E) |
|--------------------------|--------------------|--|------------------------|------------------------|
| GENERAL DATA | | | | |
| Screen Area | | 10,000 cm ² | 15,000 cm ² | 20,000 cm ² |
| Screen Type | | smartweave 4-layer sintered weaved screen fine filter | | |
| In/Out Connections | | 6"-10" | 8"-12" | 8"-14" |
| Flush Outlet Diameter | | 3" | | |
| Design Pressure | | 10 bar | | |
| Design Approvals | | BV, LR, DNV-GL, ABS, CCS (others available upon request) | | |
| Minimum Working Pressure | Standard | 2.0 bar @40/50µm - 2.4 bar @25µm | | |
| | With Flushing Pump | 1.6 bar @40/50µm - 2.0 bar @25µm | | |
| Weight (kg, Dry) | | 490 | 580 | 620 |
| Weight (kg, Wet) | | 860 | 1,040 | 1,180 |

CONSTRUCTION & MATERIALS

| | |
|-------------------------------|-----------------------|
| Pressure Vessel Housing & Lid | Carbon Steel |
| Pressure Vessel Coating | Wet Paint |
| Screen Material | 904L |
| Cleaning Mechanism | 316L / POM |
| Flush Valve | SS 316/ Marine Bronze |
| Seals | Synthetic Rubber |
| Internals | SS316/POM/PPH |

CONTROL & ELECTRICITY

| | |
|-------------------------|--|
| ΔP Transmitter | Analog |
| Electric Motor | 0.18 kW |
| Control Voltage | 24 DC (pneumatic available upon request) |
| Rated Operation Voltage | 400-480V, 3 Ph @ 50/60Hz |
| PLC Controller | Unitronics IP55 |

FLUSHING & DESIGN DATA

| | |
|-------------------------------|-----------------------|
| Design ΔP Setpoint | 0.4 bar |
| Flush Cycle Duration | 45 sec |
| Design Flush Cycles per Annum | 25,000 |
| Design Temperature | 4 - 50°C |
| Filter Orientation | Horizontal & Vertical |

ADDITIONAL UPGRADES READILY AVAILABLE:

Safe Zone, Ex ia prepared, Ex d prepared

turbo™ superturbo™

Additional Equipment & Materials available upon request

turbo™ & superturbo™ upgrades available

HIGH CAPACITY BallastSafe e-SERIES FILTERS

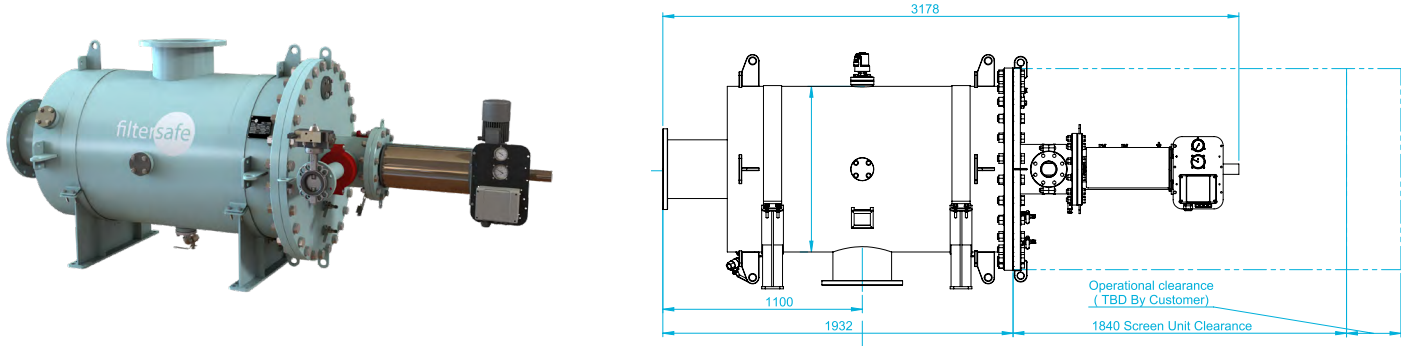
| Model | | In/Out Connections (Inch) | 50 µm | | 40 µm | | 25 µm | |
|--------------------|-------------|---------------------------|-------------------------|----------------------------|-------------------------|----------------------------|-------------------------|----------------------------|
| | | | Max. Flow Rates (m³/hr) | Flushing Flow Rate (m³/hr) | Max. Flow Rates (m³/hr) | Flushing Flow Rate (m³/hr) | Max. Flow Rates (m³/hr) | Flushing Flow Rate (m³/hr) |
| BSE0300 (#BS-300E) | Standard | 10"-14" | 960 | 23 | 750 | 23 | 500 | 21 |
| | turbo™ | 12"-16" | 1,129 | 34 | 900 | 34 | 588 | 32 |
| | superturbo™ | | 1,280 | 45 | 1,000 | 45 | 667 | 42 |
| BSE0400 (#BS-400E) | Standard | 12"-16" | 1,280 | 28 | 1,000 | 28 | 700 | 26 |
| | turbo™ | | 1,506 | 45 | 1,200 | 45 | 824 | 42 |
| | superturbo™ | | 1,707 | 57 | 1,400 | 57 | 933 | 53 |
| BSE0500 (#BS-500E) | Standard | 14"-16" | 1,600 | 34 | 1,250 | 34 | 875 | 32 |
| | turbo™ | | 1,850 | 57 | 1,500 | 57 | 1,030 | 53 |
| | superturbo™ | | 2,100 | 68 | 1,750 | 68 | 1,150 | 63 |

Note: Maximum flow rates at TSS loading of up to 50PPM as per IMO G8 Guidelines. When unsure of TSS loadings, consult Filtersafe.

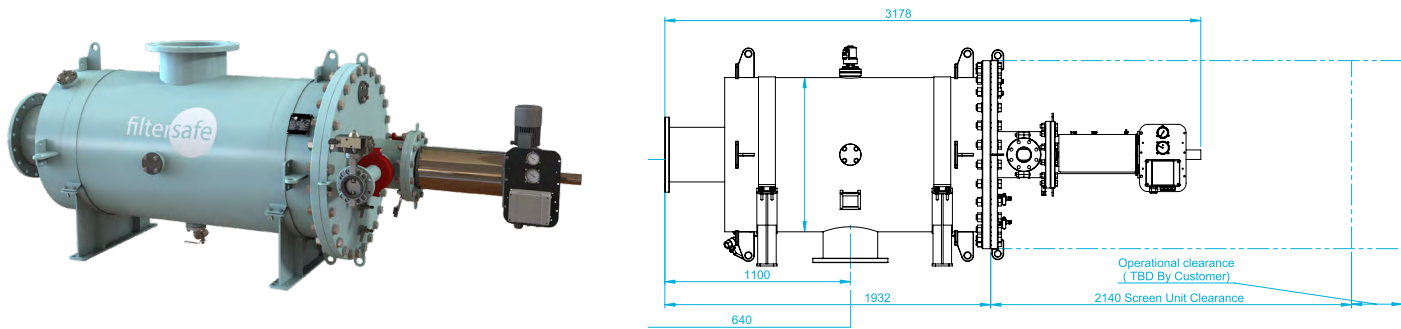
| | | | | | |
|---------------------------|---|----------------------|---------------------------------|--|-------------------------------------|
| 2,100 m³/h Max. Flow Rate | Dedicated to BWT Market - 25, 40, 50 micron Filtration Degree | 100% Screen Cleaning | 1.6 bar Min. Operating Pressure | Up to 50,000 cm² screen in a single filter | Horizontal & Vertical Configuration |
|---------------------------|---|----------------------|---------------------------------|--|-------------------------------------|

HIGH CAPACITY BallastSafe e-SERIES Horizontal Configuration Dimensions

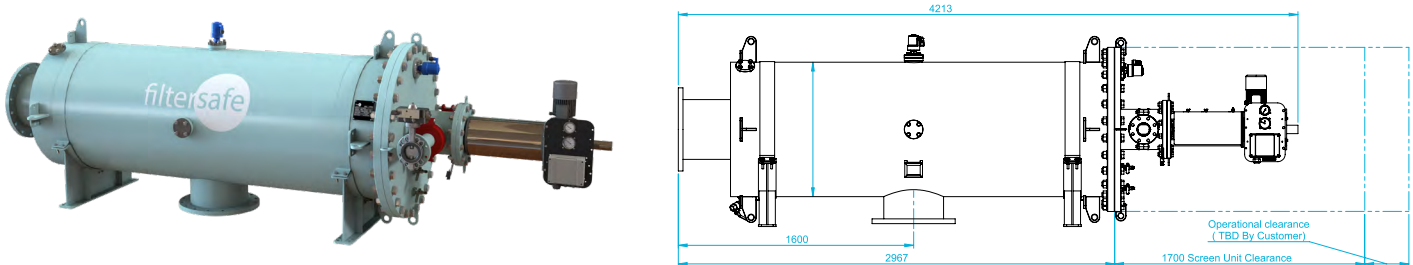
BallastSafe 300E (BSE0300/BS-300E)



BallastSafe 400E (BSE0400/BS-400E)



BallastSafe 500E (BSE0500/BS-500E)



turbo™ & superturbo™ upgrades available

HIGH CAPACITY BallastSafe e-SERIES

Vertical Configuration Dimensions

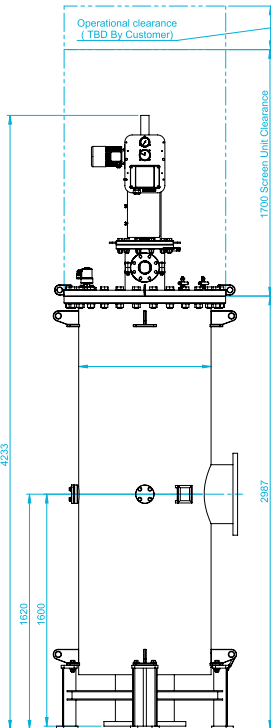
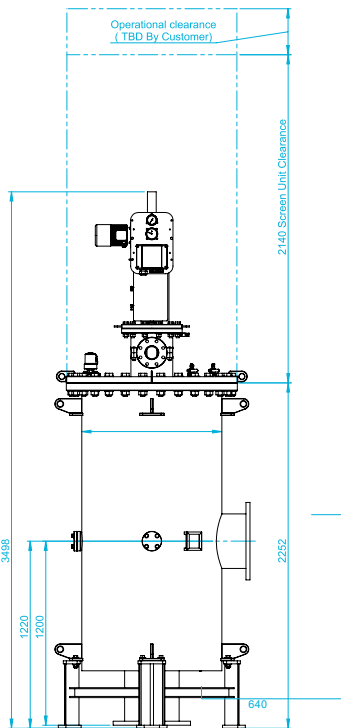
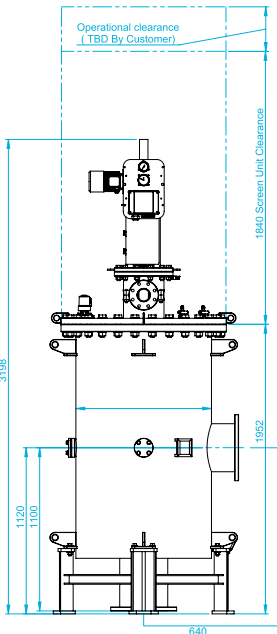
BallastSafe 300E
(BSE0300/BS-300E)



BallastSafe 400E
(BSE0400/BS-400E)



BallastSafe 500E
(BSE0500/BS-500E)



turbo™ & superturbo™ upgrades available

TECHNICAL SPECIFICATIONS

| High Capacity BallastSafe e-Series Models | | | |
|---|---|----------------------------------|------------------------|
| | BSE0300 (#BS-300E) | BSE0400 (#BS-400E) | BSE0500 (#BS-500E) |
| GENERAL DATA | | | |
| Screen Area | 30,000 cm ² | 40,000 cm ² | 50,000 cm ² |
| Screen Type | smartweave 4-layer sintered weaved screen fine filter | | |
| In/Out Connections | 10" - 16" | 12" - 16" | 12" - 18" |
| Flush Outlet Diameter | 3" | | |
| Design Pressure | 8 bar | | |
| Design Approvals | BV, LR, DNV, ABS, CCS (others available upon request) | | |
| Minimum Working Pressure | Standard | 2.0 bar @40/50µm - 2.4 bar @25µm | |
| | With Flushing Pump | 1.6 bar @40/50µm - 2.0 bar @25µm | |
| Weight (kg, Dry) | 1,360 | 1,440 | 1,620 |
| Weight (kg, Wet) | 2,560 | 2,840 | 1,900 |

Global Model Data

| CONSTRUCTION & MATERIALS | | CONTROL & ELECTRICITY | |
|-------------------------------|-----------------------|---|--|
| Pressure Vessel Housing & Lid | Carbon Steel | ΔP Transmitter | Inlet and Outlet PT Provided |
| Pressure Vessel Coating | Wet Paint | Electric Motor | 0.25 kW |
| Screen Material | 904L | Control Voltage | 24 DC (pneumatic available upon request) |
| Cleaning Mechanism | 316L / POM | Rated Operation Voltage | 400-480V, 3 Ph @ 50/60Hz |
| Flush Valve | SS 316/ Marine Bronze | PLC Controller | Unitronics IP55 |
| Seals | Synthetic Rubber | | |
| Internals | SS316/POM/PPH | | |
| FLUSHING & DESIGN DATA | | ADDITIONAL UPGRADES READILY AVAILABLE: | |
| Design ΔP Setpoint | 0.4 bar | Safe Zone, Ex ia prepared, Ex d prepared | |
| Flush Cycle Duration | 102 sec | turbo™ superturbo™ | |
| Design Flush Cycles per Annum | 25,000 | Additional Equipment & Materials available upon request | |
| Design Temperature | 4 - 50°C | | |
| Filter Orientation | Horizontal & Vertical | | |

MULTI BallastSafe e-SERIES FILTERS

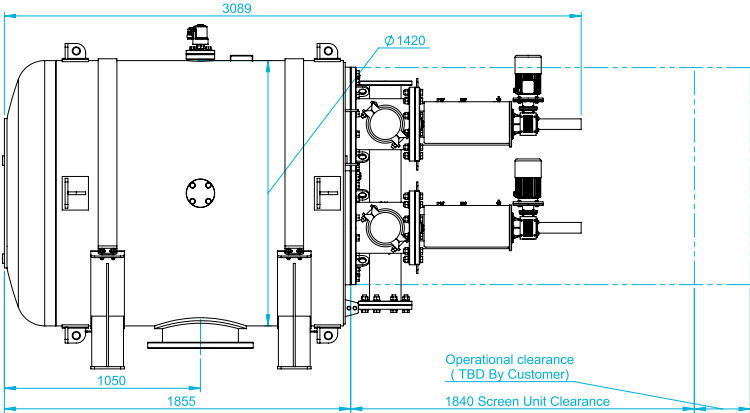
| Model | | In/Out Connections (Inch) | 50 µm | | 40 µm | | 25 µm | |
|------------------------|-------------|---------------------------|-------------------------|-----------------------------|-------------------------|-----------------------------|-------------------------|-----------------------------|
| | | | Max. Flow Rates (m³/hr) | Flushing Flow Rate* (m³/hr) | Max. Flow Rates (m³/hr) | Flushing Flow Rate* (m³/hr) | Max. Flow Rates (m³/hr) | Flushing Flow Rate* (m³/hr) |
| BSE0603 (#BS-603E) | Standard | 16"-18" | 1,800 | 68 | 1,500 | 68 | 1,000 | 63 |
| | turbo™ | | 2,100 | 102 | 1,800 | 102 | 1,100 | 95 |
| | superturbo™ | | 2,300 | 136 | 2,100 | 136 | 1,300 | 127 |
| BSE0804 (#BS-804E) | Standard | 18"-20" | 2,400 | 91/45 | 2,000 | 91/45 | 1,400 | 84/42 |
| | turbo™ | | 2,800 | 136/68 | 2,400 | 136/68 | 1,600 | 127/63 |
| | superturbo™ | | 3,000 | 181/91 | 2,800 | 181/91 | 1,800 | 169/84 |
| BSE1004 (#BS-1004E) | Standard | 20"-24" | 3,000 | 113/57 | 2,500 | 113/57 | 1,750 | 106/53 |
| | turbo™ | | 3,500 | 181/91 | 3,000 | 181/91 | 2,000 | 169/84 |
| | superturbo™ | | 3,800 | 227/113 | 3,500 | 227/113 | 2,200 | 211/106 |
| BSE1204 (#BS-1204E) | Standard | 20"-24" | 3,600 | 136/68 | 3,000 | 136/68 | 2,100 | 127/63 |
| | turbo™ | | 4,200 | 227/113 | 3,600 | 227/113 | 2,400 | 211/106 |
| | superturbo™ | | 4,500 | 272/136 | 4,200 | 272/136 | 2,750 | 253/127 |
| BSE1406 (#BS-1406E) | Standard | 20"-24" | 4,200 | 170/85 | 3,500 | 170/85 | 2,394 | 158/79 |
| | turbo™ | | 5,000 | 272/136 | 4,200 | 272/136 | 2,750 | 253/127 |
| | superturbo™ | | 5,200 | 340/170 | 4,900 | 340/170 | 3,000 | 317/158 |

* Multi filters have 2 Flushing groups: Full Flushing / Half Flushing
Note: Maximum flow rates at TSS loading of up to 50PPM as per IMO G8 Guidelines. When unsure of TSS loadings, consult Filtersafe.

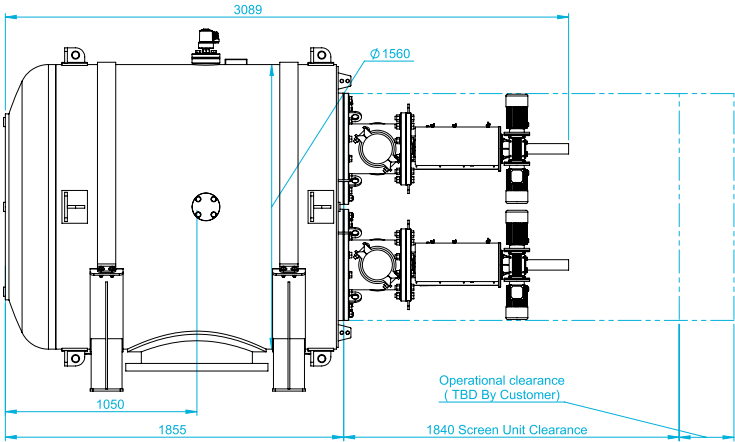
| | | | | | |
|------------------------------|--|----------------------------|---------------------------------------|---|---|
| 5,200 m³/h Max. Flow Rate | Dedicated to BWT Market - 25, 40, 50 micron Filtration Degree | 100% Screen Cleaning | 1.6 bar Min. Operating Pressure | Up to 140,000 cm² screen in a single filter | Horizontal & Vertical Configuration |
|------------------------------|--|----------------------------|---------------------------------------|---|---|

MULTI BallastSafe e-SERIES Horizontal Configuration Dimensions

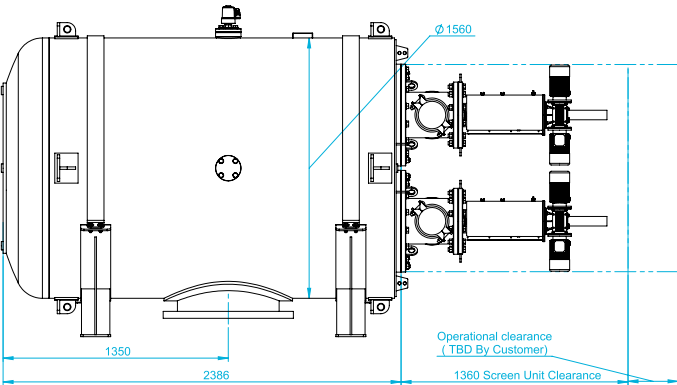
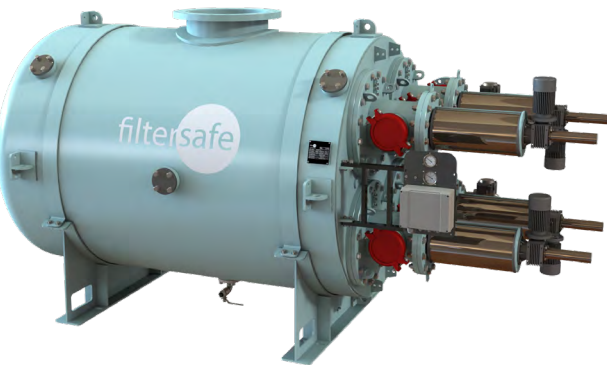
BallastSafe 603E (BSE0603/BS-603E)



BallastSafe 804E (BSE0804/BS-804E)



BallastSafe 1004E (BSE1004/BS-1004E)

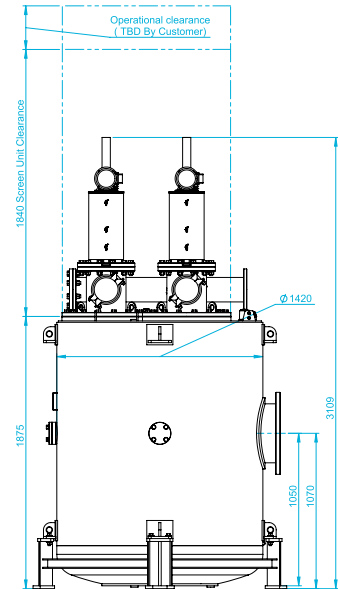


turbo™ & superturbo™ upgrades available

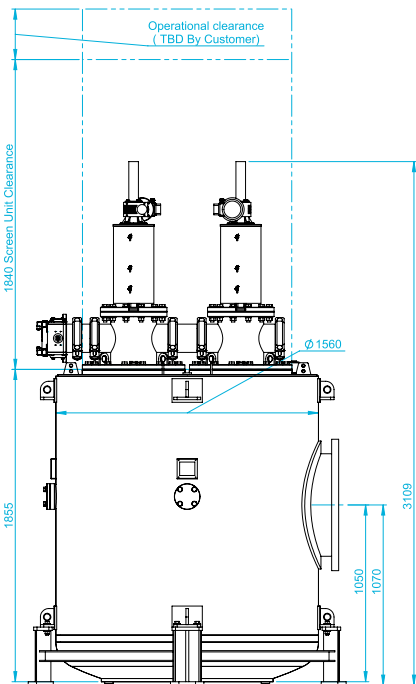
MULTI BallastSafe e-SERIES

Vertical Configuration Dimensions

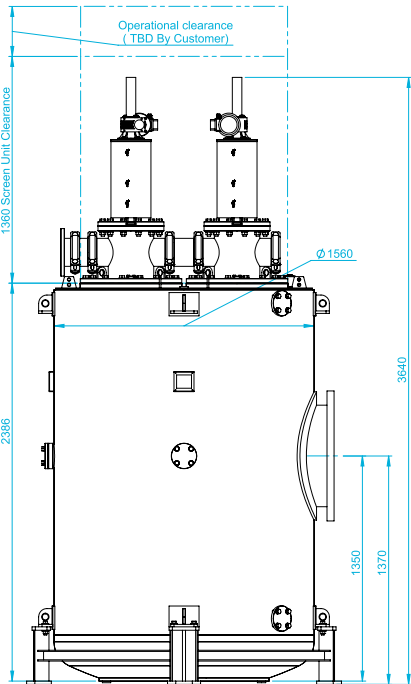
BallastSafe 603E
(BSE0603/BS-603E)



BallastSafe 804E
(BSE0804/BS-804E)



BallastSafe 1004E
(BSE01004/BS-1004E)

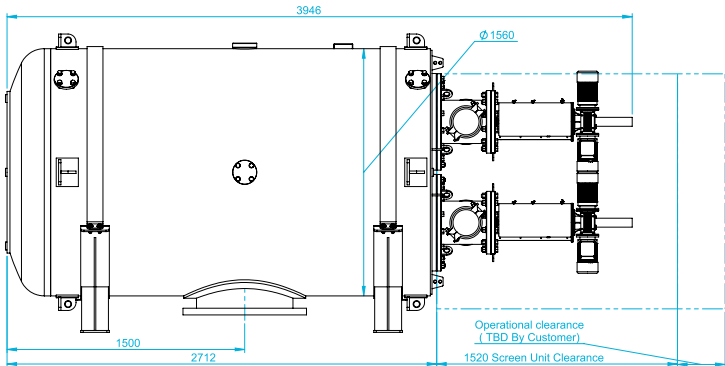


turbo™ & superturbo™ upgrades available

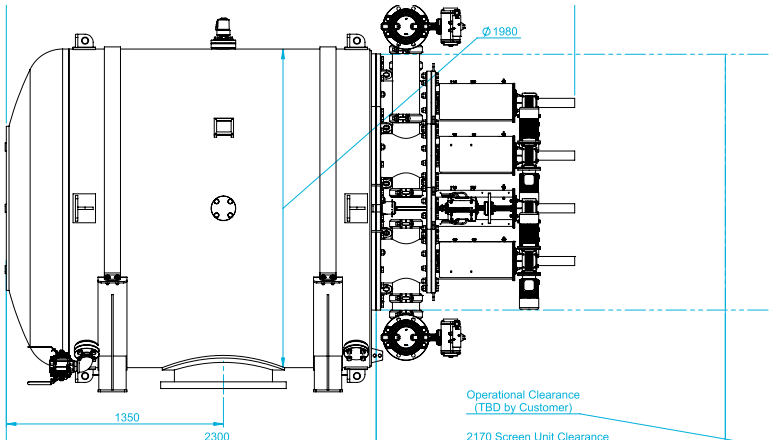
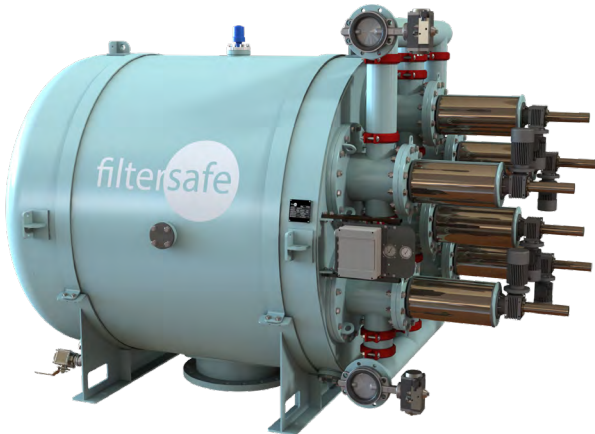
MULTI BallastSafe e-SERIES

Horizontal Configuration Dimensions

BallastSafe 1204E (BSE1204/BS-1204E)

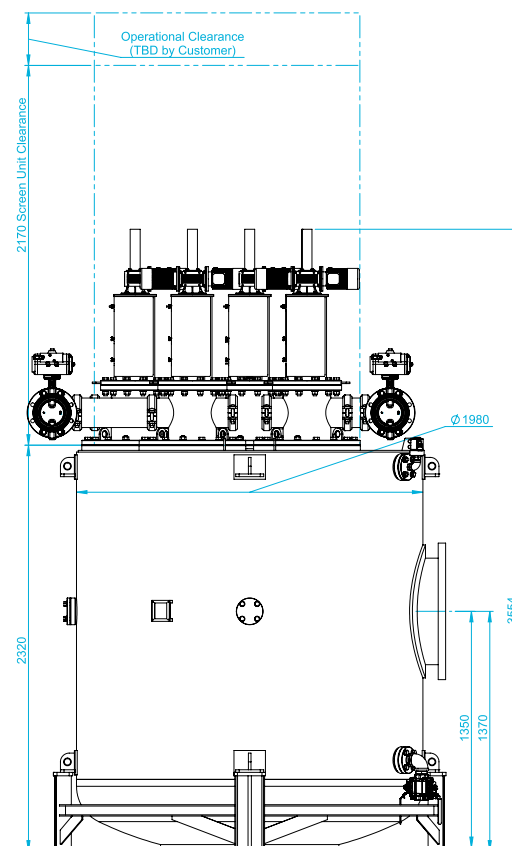
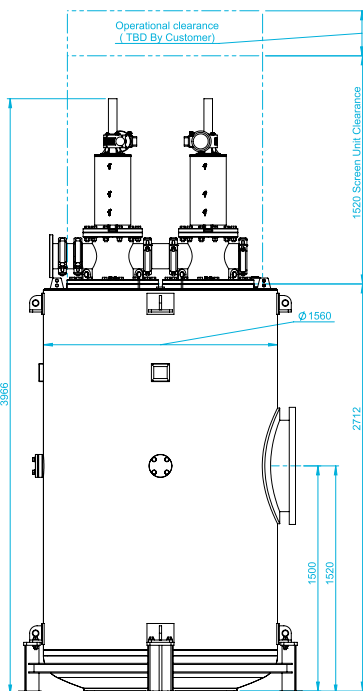


BallastSafe 1406E (BSE1406/BS-1406E)



turbo™ & superturbo™ upgrades available

Vertical Configuration Dimensions



turbo™ & superturbo™ upgrades available

Multi BallastSafe e-Series Models

| | | BSE0603 (#BS-603E) | BSE0804 (#BS-804E) | BSE1004 (#BS-1004E) |
|--------------------------|--------------------|--|------------------------|-------------------------|
| GENERAL DATA | | | | |
| Screen Area | | 60,000 cm ² | 80,000 cm ² | 100,000 cm ² |
| Screen Type | | smartweave 4-layer sintered weaved screen fine filter | | |
| In/Out Connections | | 16" - 18" | 16" - 20" | 20" - 24" |
| Flush Outlet Diameter | | 6" | 2 x 6" | 2 x 6 |
| Design Pressure | | 6.9 bar | | |
| Design Approvals | | BV, LR, DNV-GL, ABS, CCS (others available upon request) | | |
| Motor Quantity | | 3 | 4 | 4 |
| Minimum Working Pressure | Standard | 2.0 bar @40/50µm - 2.4 bar @25µm | | |
| | With Flushing Pump | 1.6 bar @40/50µm - 2.0 bar @25µm | | |
| Weight (kg, Dry) | | 2,910 | 3,360 | 3,680 |
| Weight (kg, Wet) | | 5,810 | 6,960 | 8,280 |

Global Model Data

CONSTRUCTION & MATERIALS

| | |
|-------------------------------|-----------------------|
| Pressure Vessel Housing & Lid | Carbon Steel |
| Pressure Vessel Coating | Wet Paint |
| Screen Material | 904L |
| Cleaning Mechanism | 316L / POM |
| Flush Valve | SS 316/ Marine Bronze |
| Seals | Synthetic Rubber |
| Internals | SS316/POM/PPH |

CONTROL & ELECTRICITY

| | |
|-------------------------|--|
| ΔP Transmitter | Inlet and Outlet PT Provided |
| Electric Motor | 0.18kW |
| Control Voltage | 24 DC (pneumatic available upon request) |
| Rated Operation Voltage | 400-480V, 3 Ph @ 50/60Hz |
| PLC Controller | Unitronics IP55 |

FLUSHING & DESIGN DATA

| | |
|-------------------------------|-----------------------|
| Design ΔP Setpoint | 0.4 bar |
| Flush Cycle Duration | 54 sec |
| Design Flush Cycles per Annum | 25,000 |
| Design Temperature | 4 - 50°C |
| Filter Orientation | Horizontal & Vertical |

ADDITIONAL UPGRADES READILY AVAILABLE:

Safe Zone, Ex ia prepared, Ex d prepared

turbo™ superturbo™

Additional Equipment & Materials available upon request

TECHNICAL SPECIFICATIONS

| Multi BallastSafe e-Series Models | | |
|-----------------------------------|--|----------------------------------|
| | BSE1204 (#BS-1204E) | BSE1406 (#BS-1406E) |
| GENERAL DATA | | |
| Screen Area | 120,000 cm² | 140,000 cm² |
| Screen Type | smartweave 4-layer sintered weaved screen fine filter | |
| In/Out Connections | 20" - 24" | 20" - 24" |
| Flush Outlet Diameter | 2 x 6" | 2 x 6" |
| Design Pressure | 6.9 bar | |
| Design Approvals | BV, LR, DNV-GL, ABS, CCS (others available upon request) | |
| Motor Quantity | 4 | 6 |
| Minimum Working Pressure | Standard | 2.0 bar @40/50µm - 2.4 bar @25µm |
| | With Flushing Pump | 1.6 bar @40/50µm - 2.0 bar @25µm |
| Weight (kg, Dry) | 3,830 | 5,260 |
| Weight (kg, Wet) | 9,030 | 12,360 |

Global Model Data

| | | | |
|-------------------------------|-----------------------|---|--|
| CONSTRUCTION & MATERIALS | | CONTROL & ELECTRICITY | |
| Pressure Vessel Housing & Lid | Carbon Steel | ΔP Transmitter | Inlet and Outlet PT Provided |
| Pressure Vessel Coating | Wet Paint | Electric Motor | 0.18kW |
| Screen Material | 904L | Control Voltage | 24 DC (pneumatic available upon request) |
| Cleaning Mechanism | 316L / POM | Rated Operation Voltage | 400-480V, 3 Ph @ 50/60Hz |
| Flush Valve | SS 316/ Marine Bronze | PLC Controller | Unitronics IP55 |
| Seals | Synthetic Rubber | | |
| Internals | SS316/POM/PPH | | |
| FLUSHING & DESIGN DATA | | ADDITIONAL UPGRADES READILY AVAILABLE: | |
| Design ΔP Setpoint | 0.4 bar | Safe Zone, Ex ia prepared, Ex d prepared | |
| Flush Cycle Duration | 54 sec | turbo™ superturbo™ | |
| Design Flush Cycles per Annum | 25,000 | Additional Equipment & Materials available upon request | |
| Design Temperature | 4 - 50°C | * Inlet pressure without flushing pump | |
| Filter Orientation | Horizontal & Vertical | | |

USER NOTES

USER NOTES



● OUR HEADQUARTERS

Our flagship factory. The 4,000 m² building contains our regional sales offices, R&D facilities and manufacturing and assembly plant. The facility is capable of handling very large volumes of production with an incredibly fast lead time.

sales@filtersafe.net

ASIA

● HONG KONG

Our Hong Kong manufacturing and assembly plant produces our entire line of products to the region, and is supported by a world-class steel fabrication facility.

fhongkong@filtersafe.net

● CHINA, Beijing

fschina@filtersafe.net

● SINGAPORE

fssingapore@filtersafe.net

THE AMERICAS

● NORTH AMERICA

Regional Office
fsusa@filtersafe.net

● BRAZIL, Rio de Janeiro

fsbrazil@filtersafe.net

● CHILE & PERU

fschile@filtersafe.net

EUROPE

● THE NETHERLANDS

Regional Office
& Support Center
fsholland@filtersafe.net

● GERMANY, Hamburg

fsgermany@filtersafe.net

● RUSSIA, EASTERN EUROPE & CIS COUNTRIES

fssrussia@filtersafe.net

OCEANIA

● AUSTRALIA & NEW ZEALAND

Regional Office
& Distribution Center
fsaustralia@filtersafe.net



● Filtersafe Offices

● Filtersafe Manufacturing Facilities



www.filtersafe.net



Filtersafe reserves the right to change any of the information presented in this document without prior notice.

The data presented in this document is for general information only and cannot be used for quotation purposes. Please contact Filtersafe for specific quote.